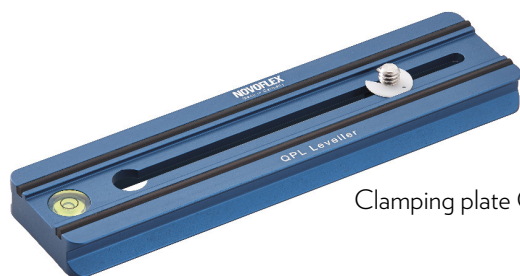


Useful accessories



Focusing rack CASTEL-Q

Fine adjustment handle
CAST-FINE



Clamping plate QPL Leveller

Information

For more information, advice and tips concerning our products contact your photo dealer, the distributor of NOVOFLEX products in your country (have a look at the "Where to buy" section at our website to find your distributor) or visit our website www.novoflex.com

For personal advice about possible accessories which is suitable for your NOVOFLEX product please contact the following phone number or send us an E-mail.

NOVOFLEX Phone: +49 8331 88888

NOVOFLEX E-Mail: mail@novoflex.com

© Novoflex Präzisionstechnik GmbH
Brahmsstraße 7
D-87700 Memmingen
Phone +49 8331 88888, Fax +49 8331 47174
Email mail@novoflex.com, Internet www.novoflex.com

N
NOVOFLEX

CASTEL-COP-DIGI

N
NOVOFLEX

USER MANUAL



Application example: CASTEL-Q with CASTEL-COP-DIGI

Scope of delivery

1	Guide rods
2	Clamp bar
3	Slide mount with insert
4	Holding clip
5	Stop bar

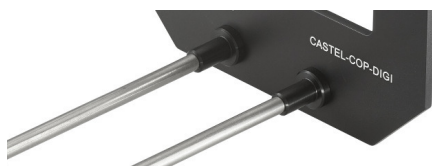


Required equipment

- In order to be able to work with the slide duplicator you need a focusing rack or bellows unit made by NOVOFLEX with bore holes for the guide rods. These are all bellows and focusing racks with hollow bars and bores since 1953.
- You can use any camera equipment on the focusing rack that allows a setting of at least 1:1. For digital cameras in combination with a macro lens, this is mostly possible. The slide duplicator CASTEL-COP-DIGI has very long guide rods, so that it can be used also with a 100mm / 105mm macro lens. For macro lenses with longer focal lengths up to 200mm, please use the longer focusing rack CASTEL XQ II.

Assembling

- Remove the two screws at the end of the guide rods (1).
- Set the slide mount (3) with the engraving showing to the camera onto the guide rods.
- And tighten it thoroughly with the two screws.
- Insert the guide rods into the bore holes of the bellows respectively the focusing rack.



- And tighten it thoroughly with the two screws.



- Set the desired magnification with the bellows unit or lens and move the slide mount (3) in the direction of the lens until you see the slide well focused.
- Now fix this position with the clamp bar (2). Please make sure that the clamp bar always sits always near the focusing rack or bellows unit.

Adjustment of magnification and focus

With the focusing rack and camera equipment with macro lenses, the magnification is adjusted via the lens and the focus via distance changes using the focusing rack.

We also recommend using an additional focusing rack in combination with the bellows unit, because the rail on which the standards runs, only allows a magnification change! Exception: automatic bellows units with rod guide!

Tip: The view-finder shows up to 10 % less than what can be seen after the picture has been taken (display, slide) – please consider this in your adjustment of scale and focus.

Insert the slide

For insertion of the slide the frame respectively the film has to be put behind the holding clip (4).

In order to achieve an ideal flatness of the slide frame, the holding clip can be pivoted by 90° and more. In this case pull the clip forward so that it can be turned above the locking bolt.

The stop bar (5) can be moved horizontally as desired and fixed with the lower clamping screw. It is used to position individual slides of a series always in the same place.



Professional tips

Please make sure that light only falls from behind through the diffuser window on the slide. Recommended light sources are: daylight - flash - light sources with daylight, light boxes, repro lights, etc.

With the focusing rack CASTEL-Q and our clamping plates of the Q-system a transverse shift of the camera can be realized. Cameras with a laterally offset tripod thread can be brought exactly into position. This facilitates your work enormously as you do not have to move the complete slide in case that you want to change the display detail.